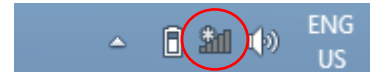



# Wireless Network Configuration for Windows 8

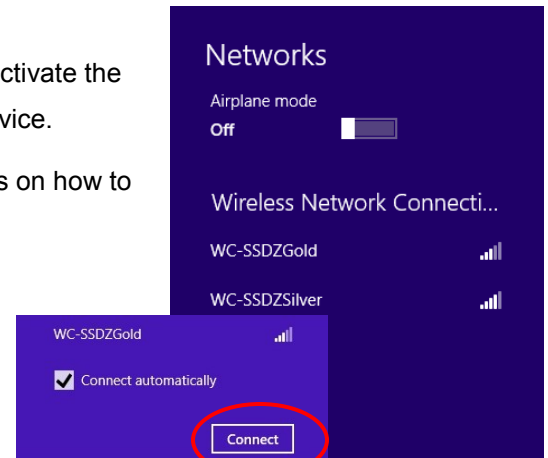
1. From the Desktop, click on the **Wi-Fi** icon the device's System Tray,



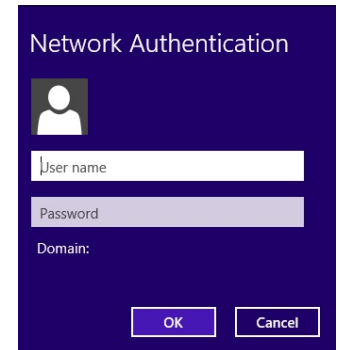
\*\* If the Wireless Network Connection is **Turned Off**,  you will need to activate the wireless radio on your device. The method may vary depending on your device.

Consult the manufacturer specific details regarding your device for specifics on how to enable the Wi-Fi. (ie: Fn/F3 )

2. Choose **WC-SSDZGold** or **WC-SSDZSilver** (choose Gold if you see both) from your list of available wireless networks and then click **Connect**



3. You will be asked to provide your **User name** and **Password**. Use your Wolf Creek username (firstname.lastname) and your Wolf Creek password. Click **OK**



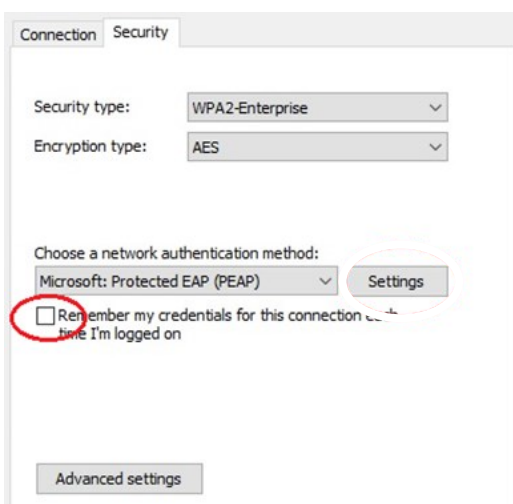
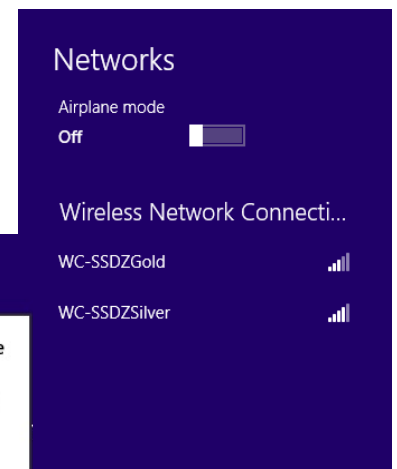
4. From the screen with the "Windows can't verify the server's identity" warning, Choose **Connect**



5. From the displayed list of available **Wireless** right click on the Wi-Fi network you have connected to.

## Network Connections,

6. Choose **View connection properties**



7. Click on the **Security** tab in the resulting window.

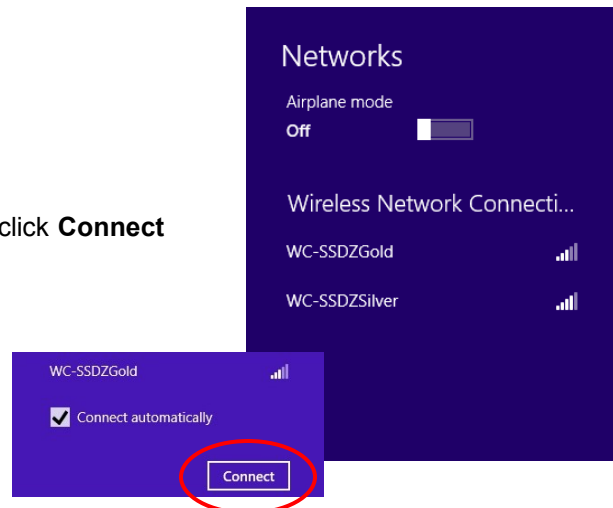
8. Uncheck the **Remember my credentials for this connection each time I'm logged on**. Remembering credentials isn't advised on a shared device.

9. Click **OK** and close all the open windows,

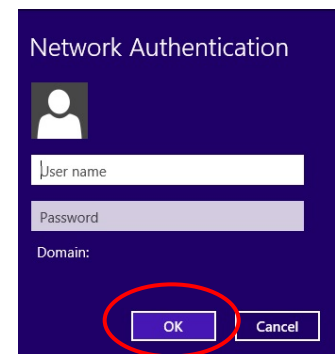
10. Go to the device's System Tray, click on the Wi-Fi icon to access and view WiFi networks.



11. Choose the network you are connecting to and then click **Connect**



12. You will be asked to provide your **User name** and **Password** once more. Use your Wolf Creek username (firstname.lastname) and your Wolf Creek password. Click **OK**



13. **Done!** Set up is complete and you are logged into the Wolf Creek SSDZ Wi-Fi and connected to the internet.